

Commercial Space For Lease | 8301 Edgewater Drive, Oakland, CA

- \$1.35/SF/month Full Service.
- Approximately 9,116 RSF available now; demisable to 408 RSF.
- New Class A finishes.
- Potential plug and play with new furniture available.
- Ample parking with minimum 3 stalls per 1,000 SF of space leased.
- Easy access to I-880 and retail amenities directly across the street.
- Experienced ownership and financially sound.
- Rental rate is negotiable.
- **Full market commission to procuring broker.**



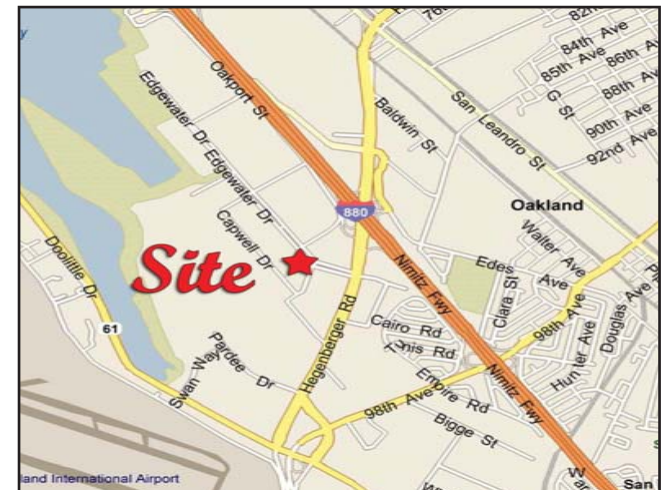
FOR ADDITIONAL INFORMATION, CONTACT:

Matt Currie
415.543.9402
mcurrie@cmcommercialinc.com
Lic #01333552

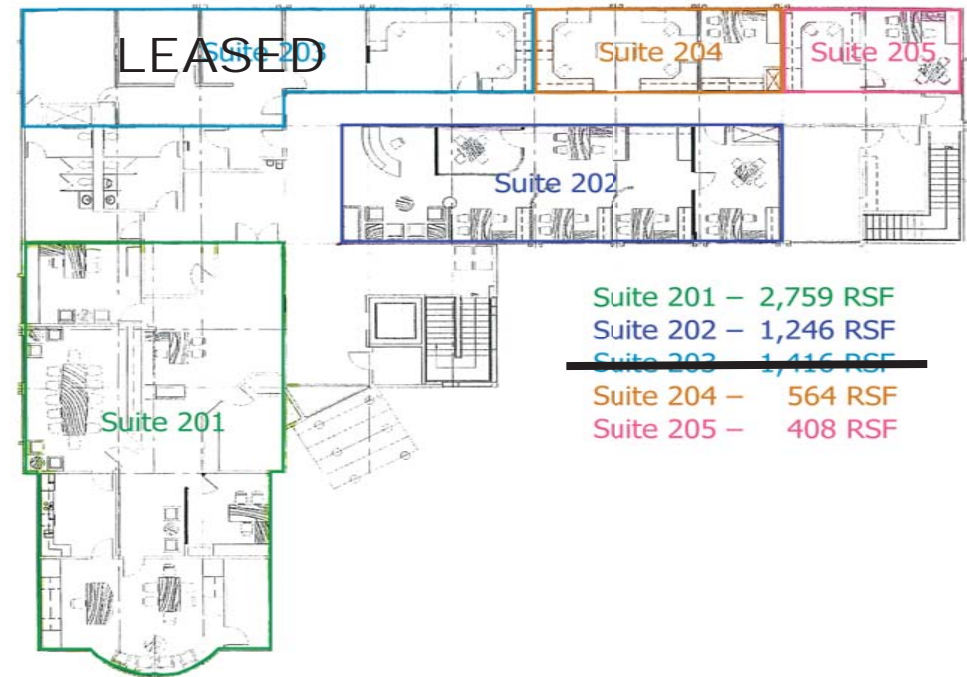
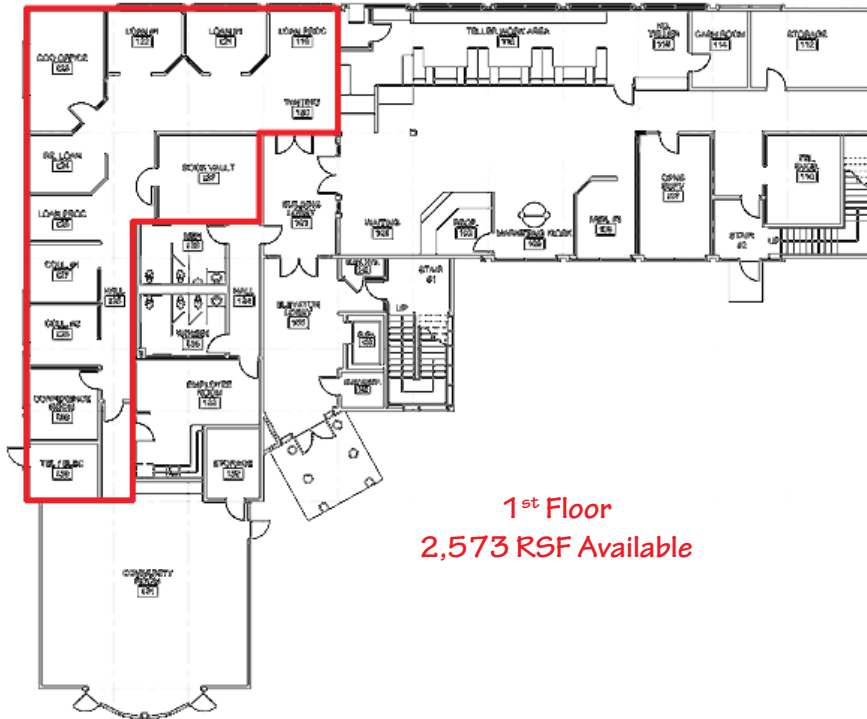
Bob Tasker
415.543.9401
rtasker@cmcommercialinc.com
Lic #01260483

Available Space For Lease

1st Floor –	2,573 RSF
2nd Floor –	
Suite 201	2,759 RSF
Suite 202	1,246 RSF
LEASED Suite 203	1,410 RSF
Suite 204	564 RSF
Suite 205	408 RSF



Commercial Space For Lease | 8301 Edgewater Drive, Oakland, CA



- Suite 201 – 2,759 RSF
- Suite 202 – 1,246 RSF
- ~~Suite 203 – 1,416 RSF~~
- Suite 204 – 564 RSF
- Suite 205 – 408 RSF